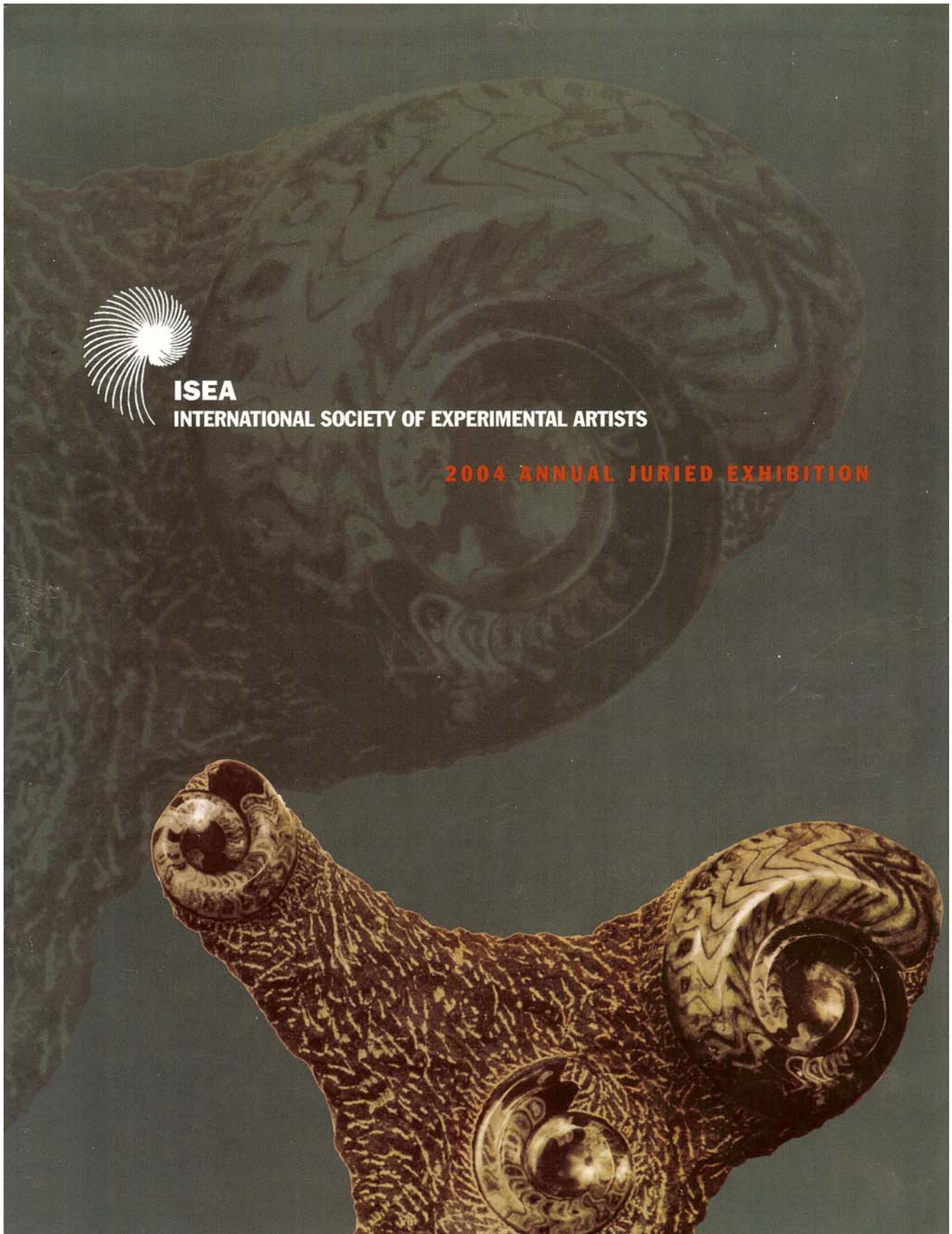


Juror for The International Society for Experimental Artists Show - 2004
and 3-day Workshop for Members



ISEA
INTERNATIONAL SOCIETY OF EXPERIMENTAL ARTISTS

2004 ANNUAL JURIED EXHIBITION





Maxine Masterfield, ISEA, A.W.S.

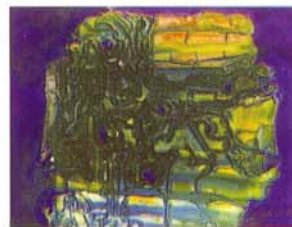
FOUNDER'S STATEMENT - MAXINE MASTERFIELD

After twelve wonderful years, I am still holding my breath. Will this be our last exhibition? Our society is growing and is stronger than ever. It is always amazing for me to see such a variety of experimental art. It just proves that a society, such as ours, came along at the right time. And, again, thanks to the vision of one of our founder's, Gracie Hegeman, we have a society where all experimental art can come together.

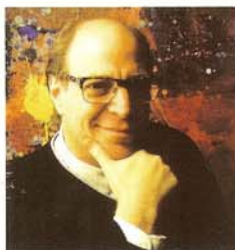
Thanks to this years juror, Bill Buchman—we have a very high caliber show. To our president, Eydi Lampasona, and to our board members, Elizabeth Concannon, Pat Ford, Mary Lou Osborne and Tina Greenlee, our sincere thanks for a job well done. They set aside time every week, as each committee member does, to see that ISEA keeps going. We have a wonderful show. We owe them all. A special thank you to the Alliance for the Arts of Ft Myers, Florida. It is a beautiful center and a great place for our members to exhibit. They have been an inspiration to work with.

And most of all, thanks to ALL of our members.

You're what it's all about.



Gladiator



Bill Buchman

JUROR'S STATEMENT - BILL BUCHMAN

To the dedicated artists of the ISEA – It is a wonderful opportunity, privilege and experience to jury this year's ISEA show. Congratulations are due to all members for their beautiful works, commitment and passion. It is never easy to make decisions "judging" art and, no doubt, some deserving works will have fallen by the way-side. It was clear to me upon reviewing the slides that if the criteria were sincerity and spiritual adventurousness I would have to include all the pieces submitted. But, alas, in order to meet space requirements, more stringent criteria were necessary.... criteria that would enable me to be as consistent and equitable as possible in the face of a great diversity of styles and approaches. So I looked for three things in your work: a well defined feeling, a well defined idea, and good execution. I looked for those works that I felt to be very strong in one or more of these areas. The works that received awards are those that I felt to be strong in all three areas. I was grateful to have so many prizes to award as there are so many absolutely super pieces. Special thanks are due to the ever helpful ISEA committee members and the Alliance for the Arts staff for their hard work, commitment and passion as well. You have all contributed much to what I believe will be a truly stellar exhibition.



Nude Directions



Eydi Lampasona

PRESIDENT'S STATEMENT - EYDI LAMPASONA

This year the International Society of Experimental Artists is pleased to hold their 2004 annual exhibition at the Alliance For The Arts in Fort Myers, Florida. We wish to thank Monty Montgomery, publicity director, and Louise Senneff, executive director and the entire staff of the Center for their expertise and time in coordinating this fabulous exhibition. We also wish to thank our juror Bill Buchman, for his expertise in selecting 92 artworks for this years exhibition. I would like to express my sincere appreciation to the entire ISEA board for their professionalism, problem solving skills and patience.

A special thank you to our Slide Chair, Terri Frolisch who preformed a flawless job and Elizabeth Holmes, Hospitality Chair for her relentless efforts. Last, but certainly not least, we would like to thank all the artists who submitted slides for the exhibition. By continuing to probe and challenge ideas, materials, and paving new creative roads, the experimental arena continues to thrive and go forth.

CREATIVE TECHNIQUES AND IDEAS



A Workshop with Bill Buchman will be presented
October 7th & 8th at the Alliance of the Arts, Ft. Meyers, FL.
at the 13th Annual International Society of Experimental Artists Exhibition

This course will be useful for the beginner and the experienced artist. As we explore the world of composition and color we will learn how to combine watercolors, acrylic inks, water-soluble crayons, paper and other interesting materials in exciting ways. Every time we lift a brush, or touch the paper or canvas, something new should happen. And it always does. But do we notice it?

I will be presenting creative techniques you won't have seen before which reveal the simple processes that lie at the root of all creativity. We will learn how to find untapped sources of inspiration easily available in the world around us and methods which make it possible for us to generate unlimited new and interesting shapes and compositions. We will focus especially on how to use color and compositional principles to create depth, power and visual impact in our paintings. There will be ample demonstrations and lots of practical tips that will help you, whether you lean toward "abstraction" or "realism", along the path to making better art.

To be truly experimental we must be in the present and sensitive when we make art. What worked in the past isn't good enough. We need to work beyond what we know...to take genuine risks...and to be willing to use a lot of paint, ink and paper in the process. In this class we're going to break some eggs in order to make that omelet. And we won't be holding back on the paprika!



According to Bill's students this course should be called " Everything you wanted to know about art but didn't learn in art school"

FOR APPLICATIONS CONTACT: Tina Greenlee, Tel. 817-738-0074 or tinaliebe@aol.com.

GENERAL INFO: Alliance of the Arts, Ft. Myers, Tel. 239 9390794



International art exhibit opens at Alliance

More than ninety large paintings and sculptures have been received by the Lee County Alliance for the Arts from artists located in twenty-six different states and Canada for an exhibition sponsored by the International Society Of Experimental Artists (ISEA).

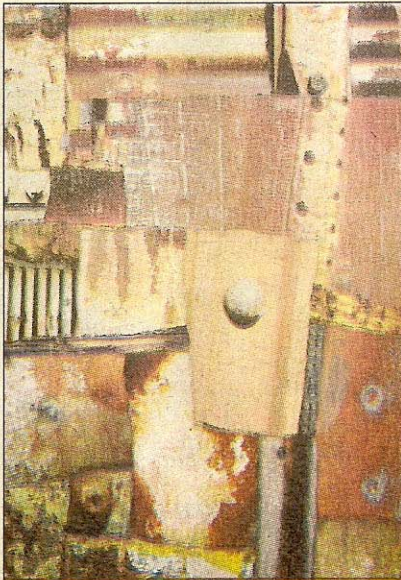
Held annually at museum and gallery locations around the world, this year's ISEA 2004 international juried competition fine art exhibit will be on view in the Alliance's William R. Frizzell and Member Galleries through October 29. ISEA 2004 marks the first time Lee County ever has hosted a major international fine art juried exhibition. Accordingly, the Alliance for the Arts and ISEA invite all members of the general public and professional arts communities to attend ISEA 2004, either during its 5 - 7 p.m. opening reception on Saturday, October 9, or during the weeks it is on display to October 29.

The collective works on view will give viewers a compact, yet comprehensive overview of the current state and broad range of artistic creativity that could influence future directions in the "professional art world."

States with the largest number of artists submitting works to ISEA 2004 are: Florida, 18; Michigan, 12; California and Texas, nine each, and Arizona five. Many states, including Alaska, Colorado, Hawaii, Illinois, Louisiana, Massachusetts, Maine... and Utah,

are represented by one entry apiece. [NOTE: In view of recent worldwide issues affecting international shipping procedures, artworks by ISEA members in European and other countries were shown in Aberdare, Wales, in 2003 and will be on view in Cardiff, Wales, during 2005.]

Louise Senneff, executive director of the Alliance says, "We are extremely pleased that the Alliance and the ISEA are presenting this major annual juried exhibition in our galleries. In addition, we are delighted that a two-day workshop conducted by internationally recognized artist Bill Buchman will be held in Alliance studio-classrooms."



***Serendipity* by Terri Froelich**

Gracie Award Now At Alliance For The Arts



ISEA Gracie Award plaque

Maxine Masterfield, co-founder and executive director of the International Society of Experimental Artists (ISEA), personally supervised the recent delivery of the ISEA 2004 Gracie Award to the Lee County Alliance for the Arts. Accurately described as "an impressive and substantial award," Gracie is now on public preview in the lobby of the Alliance headquarters, located on the Alliance campus at 10091 McGregor Boulevard, just south of the Midpoint Bridge overpass on Colonial.

Weighing in at 23 solid pounds and measuring approximately 19" x 14" high, Gracie is definitely a hefty award. Made of 100 percent natural, hand-quarried, cut and selectively polished stone, Gracie began life as an Ice Age formation during some pre-historic era when its primary geological component, ammonite, a fossil

shellfish which became extinct 100 million years ago, strongly banded or foliated. (Foliated refers to the parallel arrangement of certain mineral grains that gives metamorphic rocks a striped appearance.)

Three portions of the original block of the shell-stone's shaped surface have been highly polished to create the smooth, shiny exteriors of a locally celebrated and collectible shell, the Chambered Nautilus. The Chambered Nautilus represents constant growth, harmony and balance and, thus, was chosen as a prominent feature of the official ISEA logo and the Gracie Award.

Named in honor of ISEA co-founder, Gracie Hegeman, after her death in 1997, the award will remain on display between now and the time it is presented, along with \$1,000 in prize money, to the artist whose artwork is named Best in Show at the 5 to 7 p.m., Saturday, October 9, opening reception for the Alliance's upcoming ISEA 2004 Exhibition. Prior to that time, as well as afterwards during the exhibition's full run through October 29, members of the public are invited to view this most intriguing trophy.

ISEA 2004 is the first major international competitive juried art exhibit ever presented in Fort Myers. Accordingly, Louise Senneff, executive director of the Alliance, reports, "We are extremely pleased that the Alliance and the ISEA have agreed to present this major annual juried exhibition in our William R. Frizzell and Member Galleries. In addition, we are

continued on page 28

Gracie Award

delighted that a two-day workshop conducted by internationally renowned artist, Bill Buchman, will be held in our Alliance studio-classrooms on October 7 and 8 in conjunction with ISEA 2004. This will be the two days immediately prior to the exhibition's opening reception and awards presentation, which (instead of being held on our typical Friday evening) will be held on a Saturday."

Founded in 1991 by two artists, Maxine Masterfield and Gracie Hegeman, who were working in an experimental manner not readily accepted by the mainstream "professional art establishment," ISEA has grown to more than 400 members internationally and remains actively committed to connecting with, encouraging, informing and promoting individual artists who create works of art by personal experimentation and exploration. Every year since its founding, the US-based ISEA selects a leading art gallery or museum venue somewhere in the country to showcase its significant annual art world event. Previous ISEA exhibitions have been held in Chicago, Fort Worth, Huntsville, and Shreveport, etc. In addition, ISEA held a 2003 exhibition in Aberdare, Wales, and is holding another in Cardiff, Wales, during 2005.

Artworks juried into ISEA 2004 by this year's juror, Bill Buchman, who has recently returned to Sarasota after working for many years in Europe, primarily in Copenhagen and Paris, will be eligible to

participate in the \$3,500 in cash and merchandise awards that Buchman will designate for various artists' works in different categories. In his two-day workshop Buchman will be presenting "Creative Techniques and Ideas," focusing on experimental mixed media on paper for both beginning and experienced artists. Buchman indicates, "To be truly experimental, we must be in the present and sensitive when we make art. What worked in the past isn't good enough. We need to work beyond what we know, to take genuine risks, and to be willing to use a lot of paint, ink and paper in the process. In this class, we're going to break some eggs in order to make that omelet. And we won't be holding back on the paprika!"

Registration forms and a materials list for the workshop, which is limited to 15 students, are available at the Alliance. Also, detailed answers to questions about the workshop can be obtained via email from Bea Pappas, ISEA's local workshop chairperson, at bea.pappas@aol.com or fromtinaliebe@aol.com.



Sonata, acrylic and multi-media ISEA 2004 entry by Sedona, Arizona artist, Jan Sitts

Artists and members of the general public are encouraged to make plans to visit ISEA 2004 during the three weeks it is on view in the Alliance galleries and to call the Alliance at 939-2787 or visit www.artinlee.org for additional information.✱